

Blocchetto di balsa morbido

3X3 listello quadrato balsa

1,5X3 mm

HINGE LOCATION

AILERON

Acciaio armonico da 0,5mm

1,5 Balsa SHEET

3 mm

Balsa

STABILIZER

ELEV.

cerniera

Balsa FILL

0,5mm

0,8mm ON

€

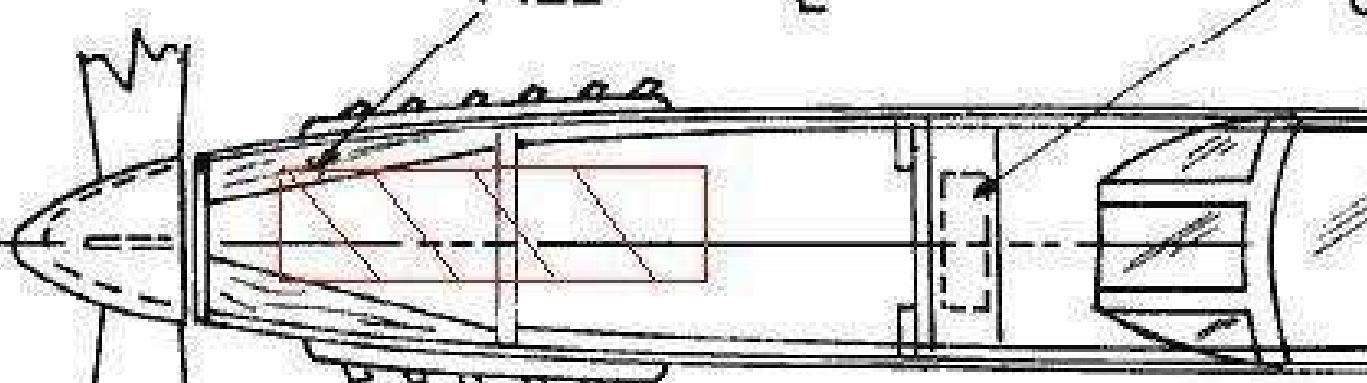
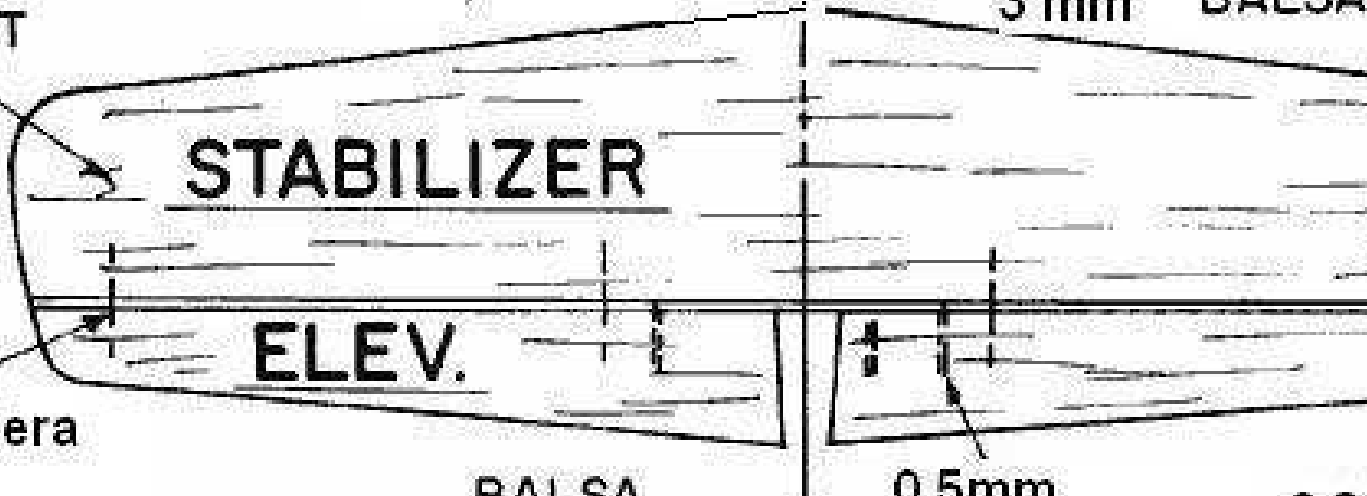
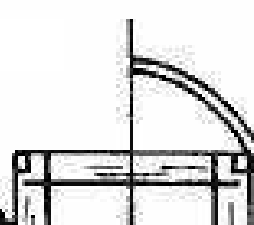
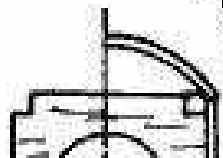
€

1,5 X 3mm Balsa

0,4mm betulla

Vista su

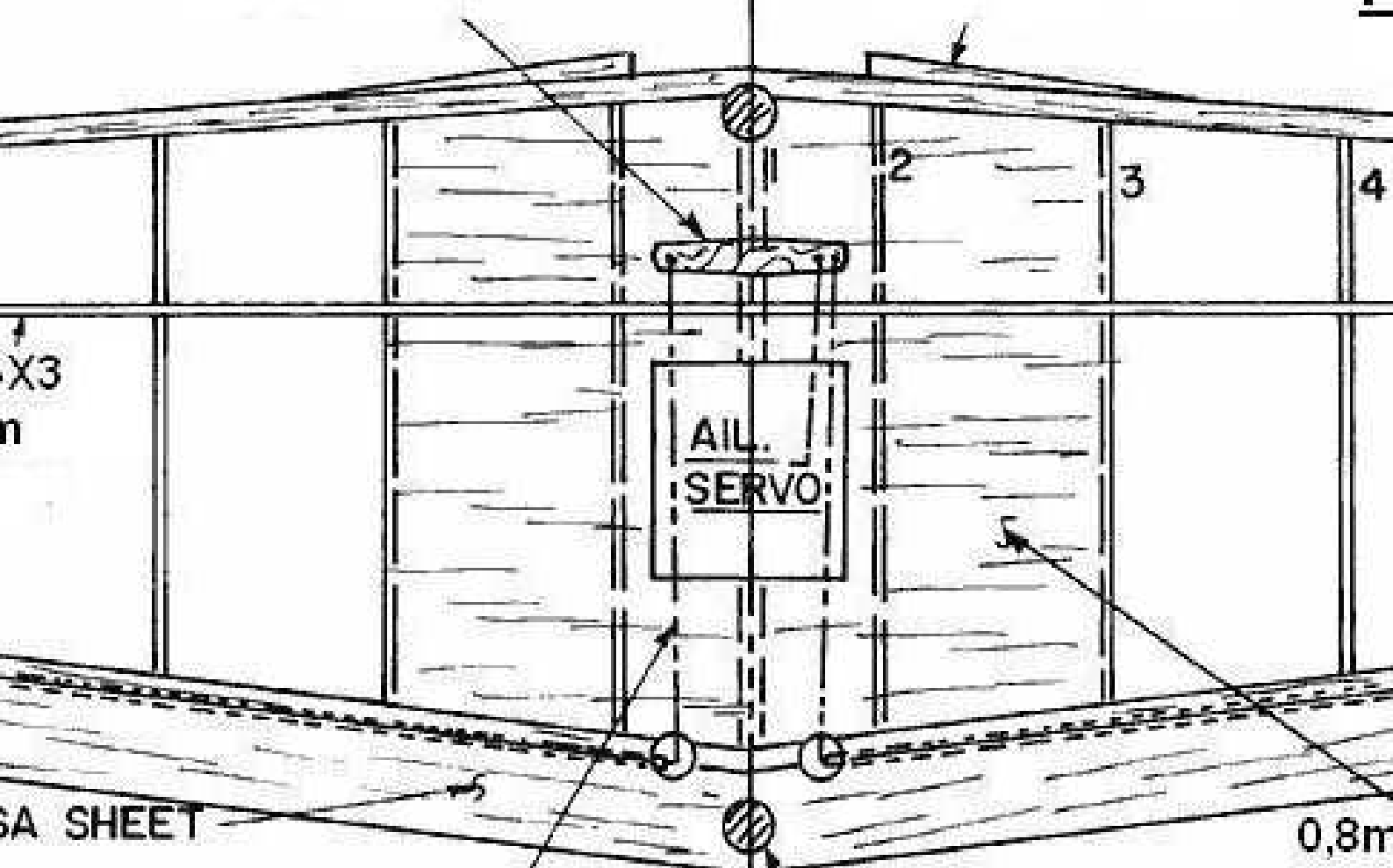
La parte sup della fusolia



0,8mm betulla

balsa morbida

P



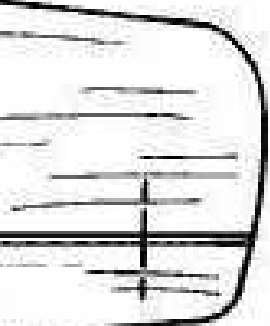
X3  
m

SA SHEET

0,8m  
s

rinvii 0,5mm  
acciaio armonico

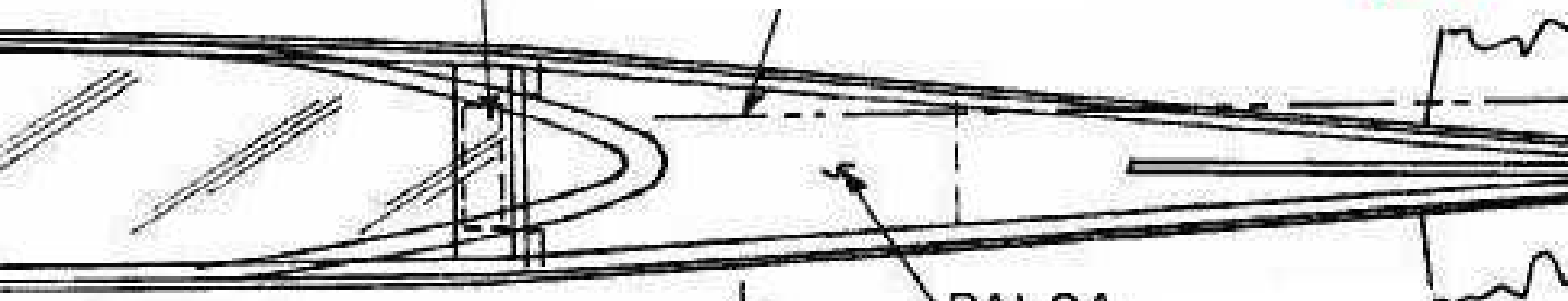
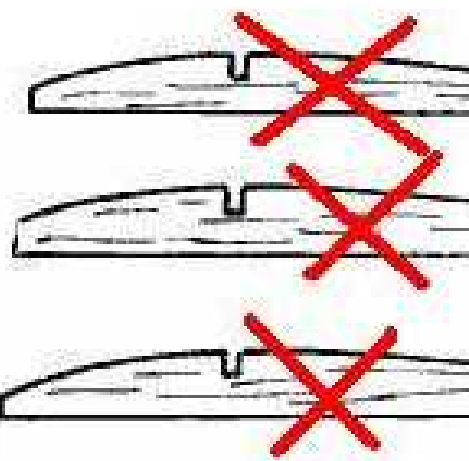
magnete



MYLAR PLASTIC

0,8mm IRON PLATES  
ON 1,5 Balsa

rinvio acciaio 0,5mm



BALSA

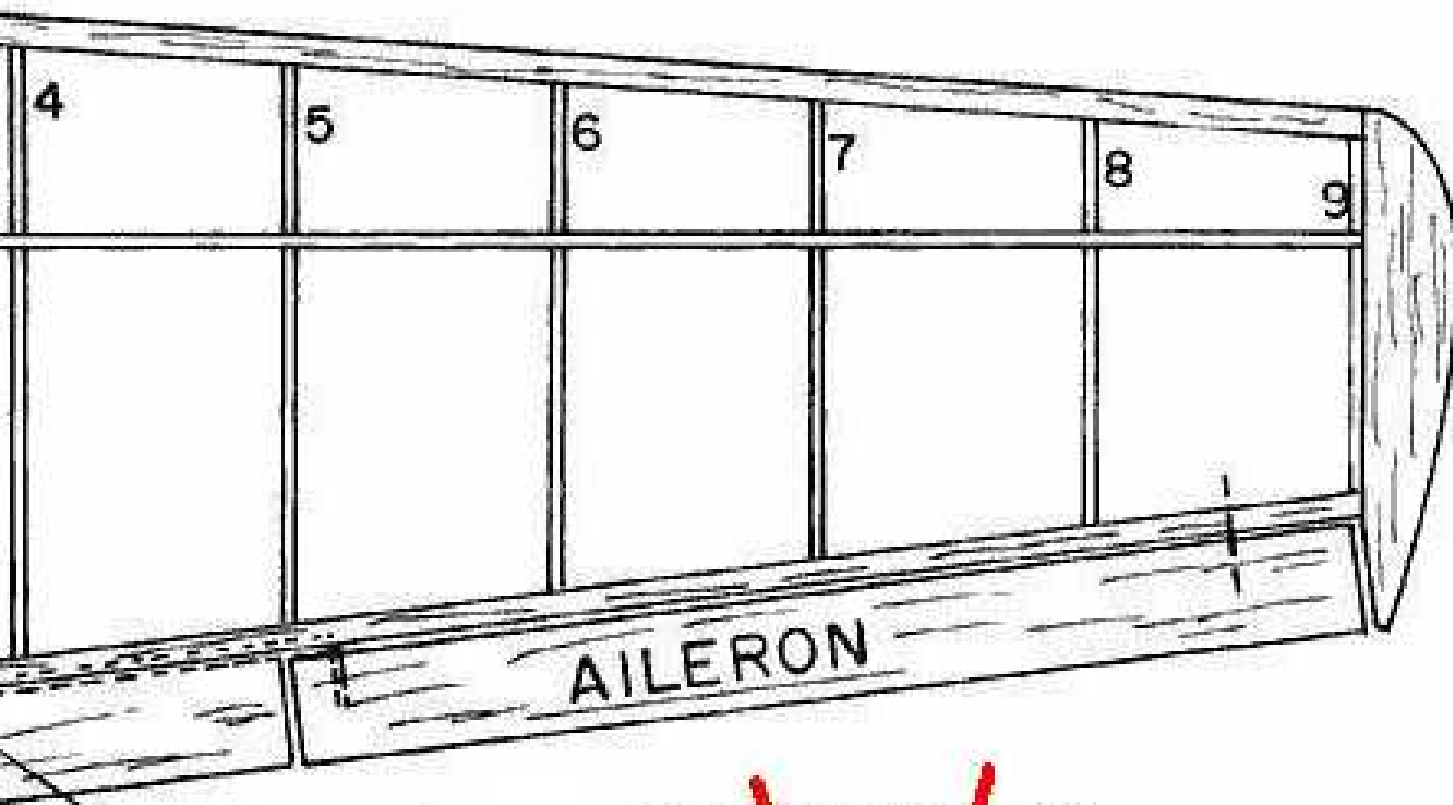
superiore

superiore ed inferiore  
oliere è ricavata da un



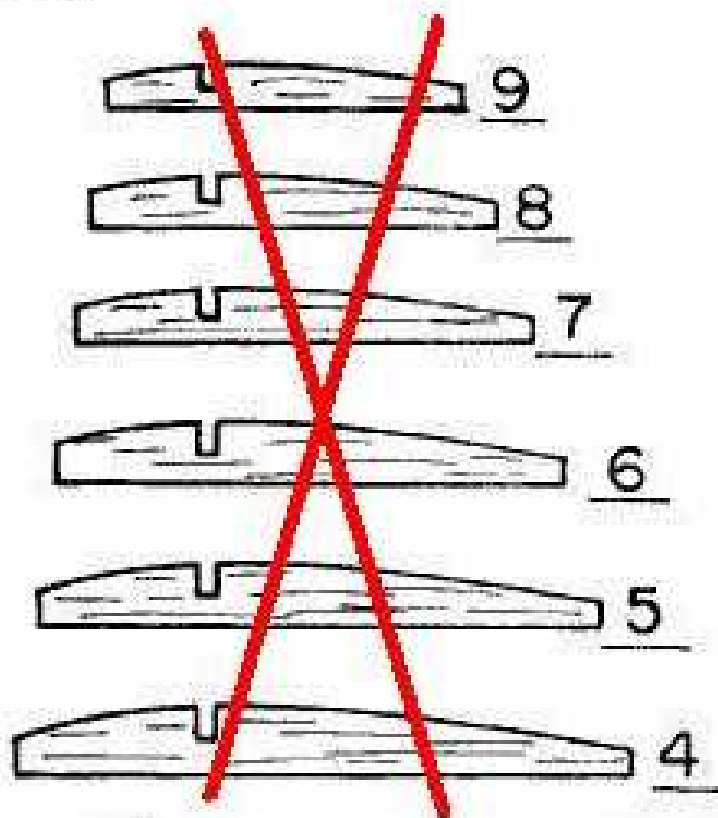
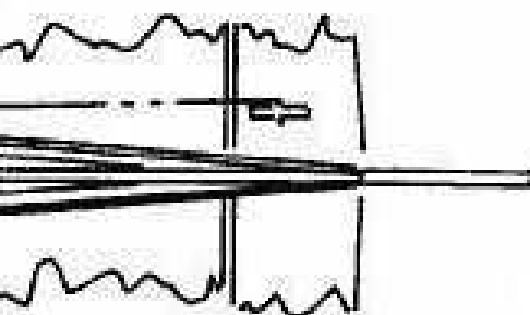
# Piano dell'ala

Diedro alare di 5°



18

8mm copertura balsa sopra e sotto

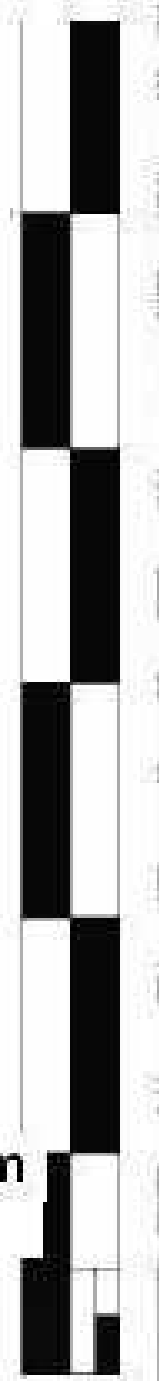


30mm

Profilo centine CLARK y. La prima centina è in betulla da 2 mm. Dalla seconda alla nona sono in balsa da 1,5mm

Sostituire tutte le centine con quelle allegare nei file successivi

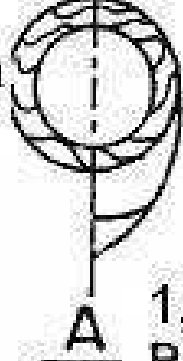
180



m

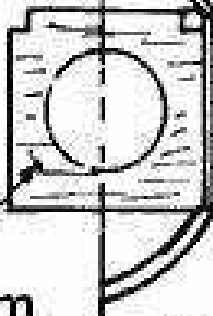
0

0,4mm  
betulla



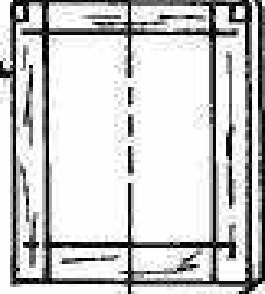
A

1,5mm  
BALSA



B

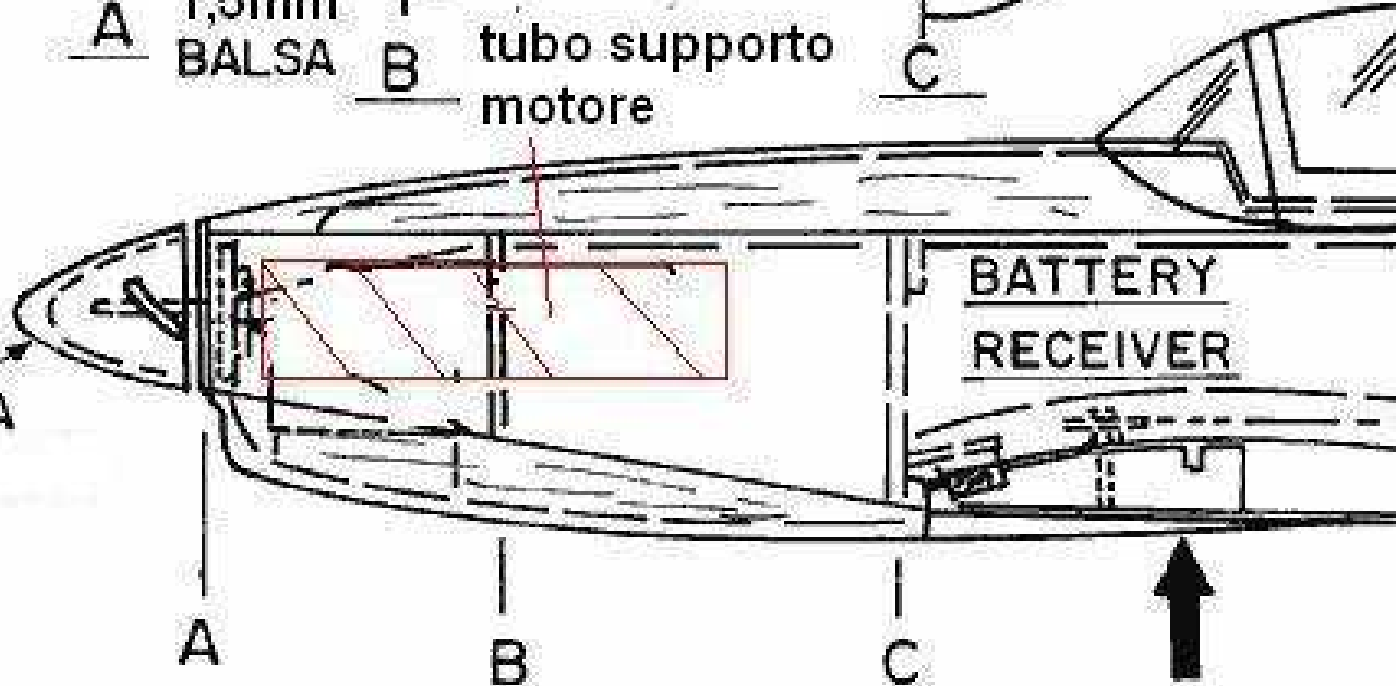
tubo supporto  
motore



C

La parte sup  
della fusolie  
blocco di ba

BALSA



A

B

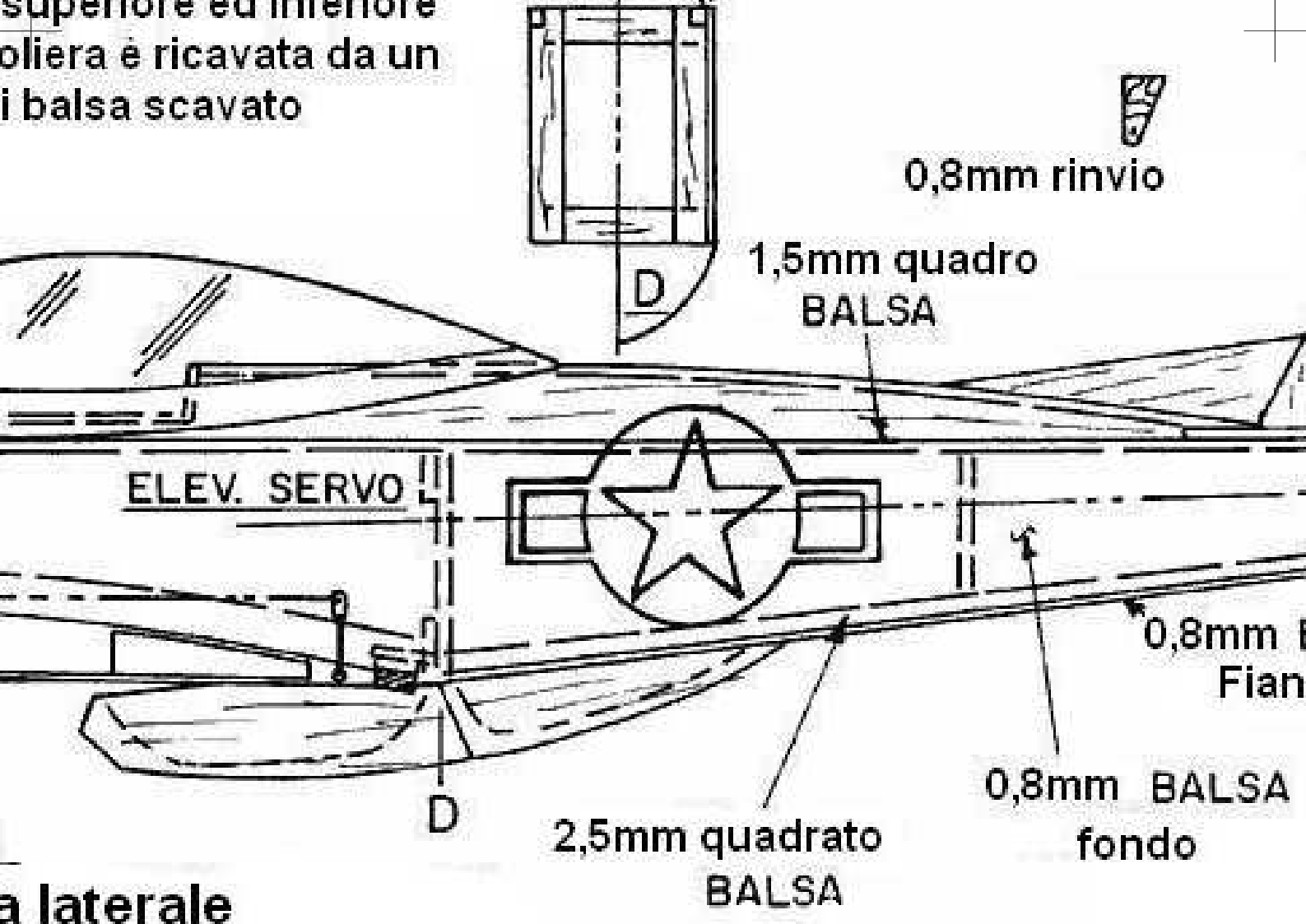
C

BALANCE

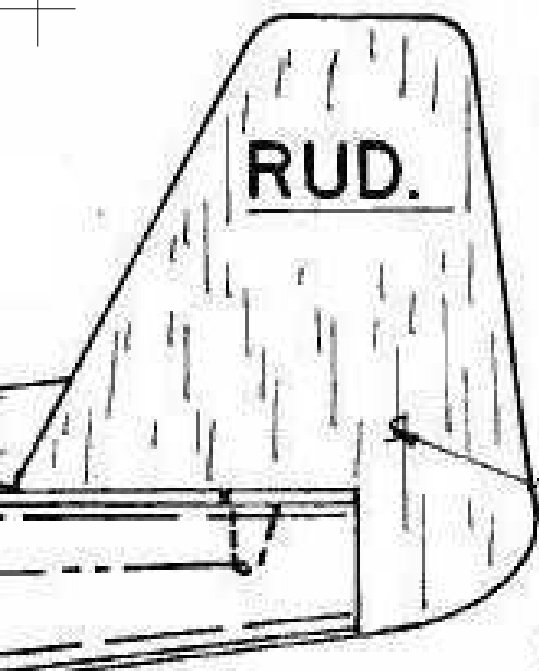
Elica 5"X3", motore brushless 5  
grammi, diametro 14mm

Fusoliera, vista la

superiore ed inferiore  
coliera è ricavata da un  
di balsa scavato



continuare tutte le sezioni con quelle  
allegate nei file successivi



1,5mm Balsa

m Balsa  
biancata

SA

Modificato da Alberto De Maestri

## MICRO MUSTANG

Ap.ali 560mm - lunghezza 441mm

<http://albyone.altervista.org>

ALL RIGHTS  
RESERVED

SHEET  
1 OF 1

03-05-2008

